

MULTISPLIT INVERTER

Flexi Multi

HEAT PUMP AIR CONDITIONER



This range offers
5 connectable outdoor units
and 6 connectable indoor units.

Performance

- Class A
- DC Inverter Technology
- COP up to 4.86
- Heat mode up to -15°C (outdoor)
- Defrost without reverse cycle

Comfort

- Built-in sensor remote control
- "Silent" mode
- "Turbo" mode
- Economy mode (sleep)
- Dehumidification mode
- Automatic fan function
- Automatic vertical air sweep

Air purity

- Standard washable air filters
- Ioniser
- Apatite filter
- Fresh air renewal

Functions

- Infrared remote control
- "Forced operation" button
- Single or permanent programming
- Delayed stop function 1 hour
- Washable front panel

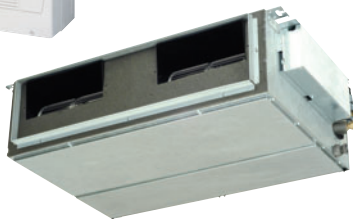
Technology

- 2, 3 or 4-way
- Auto restart
- Automatic diagnosis
- Integrated condensate pump (indoor units cassettes)
- Single phase models
- Twin rotary compressor
- Direct current motor fan

SAP-FMRV94EH



SAP-XMRV124EH



SAP-URV184EH

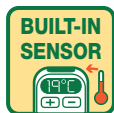


SAP-KMRV124EH

EXISTS
in version
Mini
Shiki Sai Kan



SAP-CMRV3144EH

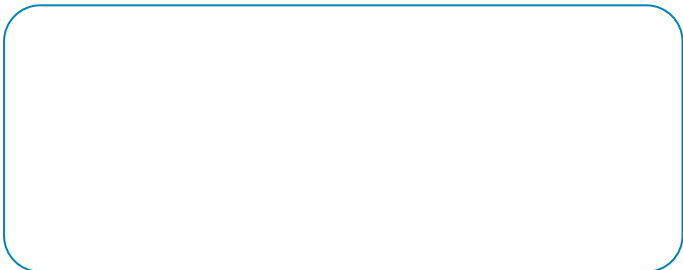


The information and pictograms on this page may not apply to all the models of this range. Please refer to the technical specifications on the next page, or consult us.

ZHENDRE

HEATING & AIR CONDITIONING

122, AVENUE DES PYRÉNÉES - B.P. 82
33883 VILLENAVE D'ORNON CEDEX - FRANCE
e-Mail : contact@zhendre.com - Web : www.zenithair.fr
Phone Export : +33 (0)5 56 87 71 10
Fax Export : +33 (0)5 56 87 71 01





Technical specifications

SAP-CMRV1424EH

SAP-CMRV1924EH

SAP-CMRV1934EH

SAP-CMRV2444EH

SAP-CMRV3144EH

MAXI NUMBER OF INDOOR UNITS

2

2

3

4

4

CAPACITIES⁽¹⁾

		4000 (2000-5000)	5600 (2100-6800)	5600 (2900-6800)	6800 (2900-8100)	8000 (2900-9200)
Cooling	W	4000 (2000-5000)	5600 (2100-6800)	5600 (2900-6800)	6800 (2900-8100)	8000 (2900-9200)
Cooling	Btu/h	13600 (6800-17100)	19100 (7200-23200)	19100 (9900-23200)	23200 (9900-27600)	27300 (9900-31400)
Heating	W	4500 (2200-5500)	7300 (2400-8400)	7300 (3400-8400)	8600 (3400-9000)	9400 (3400-9800)
Heating at -5°C outdoor	W	2925	4745	4745	5590	6110

ELECTRICAL SPECIFICATIONS

	V/Ph/Hz	220~240 / 1N / 50	220~240 / 1N / 50	220~240 / 1N / 50	220~240 / 1N / 50	220~240 / 1N / 50
Input voltage	V/Ph/Hz	220~240 / 1N / 50	220~240 / 1N / 50	220~240 / 1N / 50	220~240 / 1N / 50	220~240 / 1N / 50
Nominal current in cooling	A	4,1	7,5	6,9	8,9	7,6
Nominal current in heating	A	4,1	7,7	7,7	8,9	9,0
Nominal input in cooling	W	925	1695	1550	2000	1725
Nominal input in heating	W	925	1735	1735	2000	2040
Electrical protection (curve D or aM)	A	20	20	20	20	20
Main power supply	-	outdoor	outdoor	outdoor	outdoor	outdoor
Main electrical wiring section	Nb×mm ²	3×4,0	3×4,0	3×4,0	3×4,0	3×4,0
Section connexion indoor/outdoor	Nb×mm ²	4×1,0	4×1,0	4×1,0	4×1,0	4×1,0

PERFORMANCES

Energy efficiency class: cooling/heating	-	A / A	A / A	A / A	A / A	A / A
EER / COP	W/W	4,32 / 4,86	3,3 / 4,21	3,61 / 4,21	3,4 / 4,3	4,64 / 4,61
COP at -5°C outdoor	W/W	-	-	-	-	-
Outdoor unit airflow	m ³ /h	1900	-	-	-	-
Outdoor unit noise level ⁽²⁾	dB(A)	47	51	51	51	51
Compressor	-	rotary	rotary	rotary	rotary	rotary

DIMENSIONS

Outdoor unit (W×H×D)	mm	860×569×336	985×740×369	985×740×369	985×740×369	985×890×369
----------------------	----	-------------	-------------	-------------	-------------	-------------

WEIGHT

Outdoor	Kg	42	65	65	65	82
---------	----	----	----	----	----	----

REFRIGERANT PIPING

Initial charge in outdoor unit	g	1700 (30m total)	2800 (45m total)	2800 (45m total)	2800 (45m total)	3800 (45m total)
Liquid / gaz pipes diameters	inch	1/4 - 3/8 (×2)	1/4 - 3/8 (×2)	1/4 - 3/8 (×3)	1/4 - 3/8 (×3) + 1/4 - 1/2 (×1)	1/4 - 3/8 (×2) + 1/4 - 1/2 (×2)
Max piping length (each indoor unit / total)	m	20 / 30	25 / 45	25 / 45	25 / 60	30 / 70
Max piping height	m	15	15	15	15	15
Additional charge	g/m	NA	NA	NA	20	20

WORKING LIMITS

Cooling MAXI (indoor/outdoor)	(°C) db	32 / 43	32 / 43	32 / 43	32 / 43	32 / 43
Cooling MINI (indoor/outdoor)	(°C) db	19 / 19	19 / 19	19 / 19	19 / 19	19 / 19
Heating MAXI (indoor/outdoor)	(°C) db	27 / 24	27 / 24	27 / 24	27 / 24	27 / 24
Heating MINI (indoor/outdoor)	(°C) db	16 / -15	16 / -15	16 / -15	16 / -15	16 / -15

EQUIPMENT

Auto defrost	Without reversing	Without reversing	Without reversing	Without reversing	Without reversing
Automatic diagnosis	●	●	●	●	●
Restart delay	●	●	●	●	●

⁽¹⁾International standards ISO5151 (heating capacities and COP not in defrost mode)⁽²⁾At 1m, in low fan speed

Specifications subject to change without notice.


Technical specifications
SAP-KMRV74EH
SAP-KMRV94EH
SAP-KMRV124EH
SAP-KRV184EH
SAP-KRV244EH
CAPACITIES⁽¹⁾

Cooling	W	2200	2650	3500	5150 (1200-5500)	7100 (1200-8000)
Cooling	Btu/h	7500	9000	11900	17600 (4100-18800)	24200 (4100-27300)
Heating	W	2500	3600	4200	6000 (1300-6400)	8500 (1300-9500)
Heating at -5°C outdoor	W	1625	2340	2730	3900	5525

ELECTRICAL SPECIFICATIONS

Input voltage	V/Ph/Hz	220~240 / 1N / 50	220~240 / 1N / 50	220~240 / 1N / 50	220~240 / 1N / 50	220~240 / 1N / 50
Nominal current in cooling	A	0,11	0,15	0,15	0,30	0,51
Nominal current in heating	A	0,11	0,15	0,15	0,30	0,54
Nominal input in cooling	W	25	35	35	32	55
Nominal input in heating	W	25	35	35	34	58
Main power supply	-	outdoor	outdoor	outdoor	outdoor	outdoor
Section connexion indoor/outdoor	Nb × mm ²	4 × 1,0	4 × 1,0	4 × 1,0	4 × 1,0	4 × 1,0

PERFORMANCES

Indoor unit airflow high fan (cool/heat)	m ³ /h	410 / 460	440 / 480	480 / 500	850 / 850	920 / 920
Dehumidification	l/h	1,3	1,6	2,0	2,3	2,3
Indoor unit noise level ⁽²⁾	dB(A)	33 / 30 / 27 / 23	34 / 31 / 28 / 23	35 / 32 / 29 / 25	40 / 37 / 34 / 28	43 / 40 / 37 / 30

DIMENSIONS

Indoor unit (W × H × D)	mm	825 × 285 × 202	825 × 285 × 202	825 × 285 × 202	1065 × 298 × 231	1065 × 298 × 231
-------------------------	----	------------------------	------------------------	------------------------	-------------------------	-------------------------

WEIGHT

Indoor	Kg	10	10	10	12	12
--------	----	-----------	-----------	-----------	-----------	-----------

REFRIGERANT PIPING

Liquid / gaz pipes diameters	inch	1/4 - 3/8	1/4 - 3/8	1/4 - 3/8	1/4 - 1/2	1/4 - 5/8
Max piping length	m	see outdoor unit	see outdoor unit	see outdoor unit	see outdoor unit	see outdoor unit
Max piping height	m	see outdoor unit	see outdoor unit	see outdoor unit	see outdoor unit	see outdoor unit
Additional charge	g/m	see outdoor unit	see outdoor unit	see outdoor unit	see outdoor unit	see outdoor unit

CONDENSATS

Condensate pipe outdoor diameter	mm	18	18	18	18	18
----------------------------------	----	-----------	-----------	-----------	-----------	-----------

WORKING LIMITS

Cooling MAXI (indoor/outdoor)	(°C) db	32 / 43	32 / 43	32 / 43	32 / 43	32 / 43
Cooling MINI (indoor/outdoor)	(°C) db	19 / 19	19 / 19	19 / 19	19 / 19	19 / 19
Heating MAXI (indoor/outdoor)	(°C) db	27 / 24	27 / 24	27 / 24	27 / 24	27 / 24
Heating MINI (indoor/outdoor)	(°C) db	16 / -15	16 / -15	16 / -15	16 / -15	16 / -15

EQUIPMENT

Remote control type	IR + built-in sensor	IR + built-in sensor	IR + built-in sensor	IR + built-in sensor	IR + built-in sensor
Automatic regulation mode	CHANGE OVER	CHANGE OVER	CHANGE OVER	CHANGE OVER	CHANGE OVER
Turbo mode	●	●	●	●	●
Silence mode	●	●	●	●	●
Dehumidification mode	●	●	●	●	●
Sleep mode	●	●	●	●	●
Auto restart	● ⁽³⁾	● ⁽³⁾	● ⁽³⁾	● ⁽³⁾	● ⁽³⁾
Timer	24hr ON/OFF⁽⁴⁾	24hr ON/OFF⁽⁴⁾	24hr ON/OFF⁽⁴⁾	24hr ON/OFF⁽⁴⁾	24hr ON/OFF⁽⁴⁾
Delayed stop	1hr	1hr	1hr	1hr	1hr
Hot start	●	●	●	●	●
Auto defrost	Without reversing	Without reversing	Without reversing	Without reversing	Without reversing
Automatic ventilation	●	●	●	●	●
Fan speeds: fan / cooling / heating	4 / 4 / 4	4 / 4 / 4	4 / 4 / 4	4 / 4 / 4	4 / 4 / 4
Vertical sweep	AUTO	AUTO	AUTO	AUTO	AUTO
Horizontal sweep	MANU	MANU	MANU	MANU	MANU
Automatic diagnosis	●	●	●	●	●
Restart delay	●	●	●	●	●
Filter	Standard	Standard	Standard	Standard	Standard
Purification	Ioniser	Ioniser	Ioniser	Ioniser	Ioniser

⁽¹⁾International standards ISO5151 (heating capacities and COP not in defrost mode)

⁽²⁾Indoor unit in H/M/L/quiet fan speed

⁽³⁾Should a short accidental power cut arise

⁽⁴⁾Single or permanent programming

Specifications subject to change without notice.



Technical specifications

SAP-FMRV94EH

SAP-FTMRV124EH

SAP-FTRV184EH

SAP-FTRV244EH

CAPACITIES⁽¹⁾

Cooling	W	2650	3500	5150	7100
Cooling	Btu/h	9000	11900	17600	24200
Heating	W	3600	4200	6000	8500
Heating at -5°C outdoor	W	2340	2730	3900	5525

ELECTRICAL SPECIFICATIONS

Input voltage	V/Ph/Hz	220~240/1N/50	220~240/1N/50	220~240/1N/50	220~240/1N/50
Main power supply	-	outdoor	outdoor	outdoor	outdoor
Section connexion indoor/outdoor	Nb x mm ²	4 x 1,0	4 x 1,0	4 x 1,0	4 x 1,0

PERFORMANCES

Indoor unit airflow	m ³ /h	400	700	800	900
Dehumidification	l/h	1,5	1,8	2,0	2,0
Indoor unit noise level ⁽²⁾	dB(A)	43 / 40 / 30	44 / 40 / 35	48 / 44 / 39	50 / 47 / 44

DIMENSIONS

Indoor unit (W×H×D)	mm	560×700×200	900×680×190	900×680×190	900×680×190
---------------------	----	-------------	-------------	-------------	-------------

WEIGHT

Indoor	Kg	18,6	23,5	23,5	23,5
--------	----	------	------	------	------

REFRIGERANT PIPING

Liquid / gaz pipes diameters	inch	1/4 - 3/8	1/4 - 3/8	1/4 - 1/2	1/4 - 5/8
Max piping length	inch	see outdoor unit	see outdoor unit	see outdoor unit	see outdoor unit
Max piping height	inch	see outdoor unit	see outdoor unit	see outdoor unit	see outdoor unit
Additional charge	inch	see outdoor unit	see outdoor unit	see outdoor unit	see outdoor unit

CONDENSATS

Condensate pipe outdoor diameter	mm	-	26	26	26
----------------------------------	----	---	----	----	----

WORKING LIMITS

Cooling MAXI (indoor/outdoor)	(°C) db	32 / 43	32 / 43	32 / 43	32 / 43
Cooling MINI (indoor/outdoor)	(°C) db	19 / 19	19 / 19	19 / 19	19 / 19
Heating MAXI (indoor/outdoor)	(°C) db	27 / 24	27 / 24	27 / 24	27 / 24
Heating MINI (indoor/outdoor)	(°C) db	16 / -15	16 / -15	16 / -15	16 / -15

EQUIPMENT

Remote control type	IR + built-in sensor	IR + built-in sensor	IR + built-in sensor	IR + built-in sensor
Automatic regulation mode	CHANGE OVER	CHANGE OVER	CHANGE OVER	CHANGE OVER
Turbo mode	●	●	●	●
Silence mode	●	●	●	●
Dehumidification mode	●	●	●	●
Sleep mode	●	●	●	●
Auto restart	● ⁽³⁾	● ⁽³⁾	● ⁽³⁾	● ⁽³⁾
Timer	24hr ON/OFF ⁽⁴⁾	24hr ON/OFF ⁽⁴⁾	24hr ON/OFF ⁽⁴⁾	24hr ON/OFF ⁽⁴⁾
Delayed stop	1 H	1 H	1 H	1 H
Hot start	●	●	●	●
Auto defrost	Without reversing	Without reversing	Without reversing	Without reversing
Automatic ventilation	●	●	●	●
Fan speeds: fan / cooling / heating	3 / 3 / 3	3 / 3 / 3	3 / 3 / 3	3 / 3 / 3
Vertical sweep	AUTO	AUTO	AUTO	AUTO
Horizontal sweep	MANU	MANU	MANU	MANU
Automatic diagnosis	●	●	●	●
Restart delay	●	●	●	●

⁽¹⁾International standards ISO5151⁽²⁾At 1m, indoor unit in H/M/L fan speed⁽³⁾Should a short accidental power cut arise⁽⁴⁾Single or permanent programming

Specifications subject to change without notice.

MULTISPLIT CASSETTE INVERTER *Flexi Multi*

Heat pump indoor unit



Technical specifications

SAP-XMRV94EH

SAP-XMRV124EH

SAP-XRV184EH

CAPACITIES⁽¹⁾

Cooling	W	2650	3500	5150
Cooling	Btu/h	9000	11900	17600
Heating	W	3600	4200	6000
Heating at -5°C outdoor	W	2340	2730	3900

ELECTRICAL SPECIFICATIONS

Input voltage	V/Ph/Hz	220~240 / 1N / 50	220~240 / 1N / 50	220~240 / 1N / 50
Main power supply	-	outdoor	outdoor	outdoor
Section connexion indoor/outdoor	Nb x mm ²	4 x 1,0	4 x 1,0	4 x 1,0

PERFORMANCES

Indoor unit airflow high fan	m ³ /h	700	700	750
Dehumidification	l/h	1,5	1,8	2,0
Indoor unit noise level ⁽²⁾	dB(A)	43 / 39 / 36	43 / 39 / 36	45 / 40 / 37

DIMENSIONS

Indoor unit (W x H x D)	mm	575 x 296 x 575	575 x 296 x 575	575 x 296 x 575
Over all front panel (W x D)	mm	730 x 730	730 x 730	730 x 730
Minimum height in false ceiling	mm	-	-	-

WEIGHT

Indoor (unit + front panel)	Kg	16,5 + 2,5	16,5 + 2,5	16,5 + 2,5
-----------------------------	----	------------	------------	------------

REFRIGERANT PIPING

Liquid / gaz pipes diameters	inch	1/4 - 3/8	1/4 - 3/8	1/4 - 1/2
Max piping length	m	see outdoor unit	see outdoor unit	see outdoor unit
Max piping height	m	see outdoor unit	see outdoor unit	see outdoor unit
Additional charge	g/m	see outdoor unit	see outdoor unit	see outdoor unit

CONDENSATS

Condensate pipe outdoor diameter	mm	18	18	18
----------------------------------	----	----	----	----

WORKING LIMITS

Cooling MAXI (indoor/outdoor)	(°C) db	32 / 43	32 / 43	32 / 43
Cooling MINI (indoor/outdoor)	(°C) db	19 / 19	19 / 19	19 / 19
Heating MAXI (indoor/outdoor)	(°C) db	27 / 24	27 / 24	27 / 24
Heating MINI (indoor/outdoor)	(°C) db	16 / -15	16 / -15	16 / -15

EQUIPMENT

Remote control type	IR + built-in sensor	IR + built-in sensor	IR + built-in sensor
Automatic regulation mode	CHANGE OVER	CHANGE OVER	CHANGE OVER
Dehumidification mode	●	●	●
Sleep mode	●	●	●
Auto restart	●(3)	●(3)	●(3)
Timer	24hr ON/OFF ⁽⁴⁾	24hr ON/OFF ⁽⁴⁾	24hr ON/OFF ⁽⁴⁾
Delayed stop	1 H	1 H	1 H
Hot start	●	●	●
Auto defrost	Without reversing	Without reversing	Without reversing
Automatic ventilation	●	●	●
Fan speeds: fan / cooling / heating	3 / 3 / 3	3 / 3 / 3	3 / 3 / 3
Vertical sweep	AUTO	AUTO	AUTO
Automatic diagnosis	●	●	●
Restart delay	●	●	●

⁽¹⁾International standards ISO5151
(heating capacities and COP not in defrost mode)
⁽²⁾At 1m, indoor unit in H/M/L fan speed

⁽³⁾Should a short accidental power cut arise
⁽⁴⁾Single or permanent programming

Specifications subject to change without notice.



Technical specifications

SAP-UMRV94EH

SAP-UMRV124EH

SAP-URV184EH

SAP-URV244EH

CAPACITIES⁽¹⁾

Cooling	W	2650	3500	5150	7100
Cooling	Btu/h	9000	11900	17600	24200
Heating	W	3600	4200	6000	8500
Heating at -5°C outdoor	W	2340	2730	3900	5525

ELECTRICAL SPECIFICATIONS

Input voltage	V/Ph/Hz	220~240/1N/50	220~240/1N/50	220~240/1N/50	220~240/1N/50
Main power supply	-	outdoor	outdoor	outdoor	outdoor
Section connexion indoor/outdoor	Nb x mm ²	4 x 1,0	4 x 1,0	4 x 1,0	4 x 1,0

PERFORMANCES

Indoor unit airflow	m ³ /h	600	600	875	1000
Available pressure at mini airflow	Pa	49 / 69	49 / 69	49 / 69	49 / 69
Dehumidification	l/h	1,5	1,8	2,0	2,5
Indoor unit noise level ⁽²⁾	dB(A)	41 / 36 / 35	41 / 38 / 36	45 / 38 / 33	48 / 40 / 37

DIMENSIONS

Indoor unit (W x H x D)	mm	852 x 266 x 571	852 x 266 x 571	1058 x 266 x 571	1058 x 266 x 571
Minimum height in false ceiling	mm	276	276	276	276

WEIGHT

Indoor	Kg	30	30	35	35
--------	----	----	----	----	----

REFRIGERANT PIPING

Liquid / gaz pipes diameters	inch	1/4 - 3/8	1/4 - 3/8	1/4 - 1/2	1/4 - 5/8
Max piping length	m	see outdoor unit	see outdoor unit	see outdoor unit	see outdoor unit
Max piping height	m	see outdoor unit	see outdoor unit	see outdoor unit	see outdoor unit
Additional charge	g/m	see outdoor unit	see outdoor unit	see outdoor unit	see outdoor unit

CONDENSATS

Condensate pipe outdoor diameter	mm	18	18	18	18
----------------------------------	----	----	----	----	----

WORKING LIMITS

Cooling MAXI (indoor/outdoor)	(°C db)	32 / 43	32 / 43	32 / 43	32 / 43
Cooling MINI (indoor/outdoor)	(°C db)	19 / 19	19 / 19	19 / 19	19 / 19
Heating MAXI (indoor/outdoor)	(°C db)	27 / 24	27 / 24	27 / 24	27 / 24
Heating MINI (indoor/outdoor)	(°C db)	16 / -15	16 / -15	16 / -15	16 / -15

EQUIPMENT

Remote control type	IR + built-in sensor	IR + built-in sensor	IR + built-in sensor	IR + built-in sensor
Automatic regulation mode	CHANGE OVER	CHANGE OVER	CHANGE OVER	CHANGE OVER
Turbo mode	●	●	●	●
Silence mode	●	●	●	●
Dehumidification mode	●	●	●	●
Sleep mode	●	●	●	●
Auto restart	● ⁽³⁾	● ⁽³⁾	● ⁽³⁾	● ⁽³⁾
Timer	24hr ON/OFF ⁽⁴⁾	24hr ON/OFF ⁽⁴⁾	24hr ON/OFF ⁽⁴⁾	24hr ON/OFF ⁽⁴⁾
Delayed stop	1hr	1hr	1hr	1hr
Hot start	●	●	●	●
Auto defrost	Without reversing	Without reversing	Without reversing	Without reversing
Automatic ventilation	●	●	●	●
Fan speeds: fan / cooling / heating	3 / 3 / 3	3 / 3 / 3	3 / 3 / 3	3 / 3 / 3
Automatic diagnosis	●	●	●	●
Restart delay	●	●	●	●
Filter	Standard	Standard	Standard	Standard

⁽¹⁾International standards ISO5151

⁽²⁾At 1m, indoor unit in H/M/L fan speed

⁽³⁾Should a short accidental power cut arise

⁽⁴⁾Single or permanent programming

Specifications subject to change without notice.