



SAMSUNG oro kondicionierių programavimo ir klaidų kodai

Turinys	1 psl
INVERTER kondicionierių seni ir nauji opcijų kodai. Nauji kodai ištaiso neteisingą funkcijos „Auto-restart“ veikimą	2 psl
INVERTER kondicionierių vidinio bloko klaidos indikacija	3 psl
INVERTER kondicionierių išorinio bloko klaidos indikacija	4 psl
INVERTER kondicionierių vidinio bloko skaitmeninė klaidos indikacija	5 psl
MODERATO kondicionierių vidinio bloko klaidos indikacija	6 psl
MODERATO kondicionierių opcijų kodai	7 psl
FORTE kondicionierių vidinio bloko klaidos indikacija	8 psl
FORTE AQ09 ir AQ12 kondicionierių opcijų kodai	9 psl
FORTE AQ18 kondicionierių opcijų kodai	10 psl
FORTE AQ24 kondicionierių opcijų kodai	11 psl



SERVICE BULLETIN

Product :	Room Air Conditioner	Bulletin No. : 20070515
Model :	AQV**F(M,V)** (Forte, Moderto, Vivace-PJT)	Bulletin Date : 2007/05/15
Buyer :		ECN No. : Field info

SUBJECT : 07 inverter series option code missing troubleshooting

Defect Symptom

Option code is missing when the power failure occurs or power is disconnected without stopping with remote controller. After resetting option code, it may happen again when power failure occurs or switch off directly.

Cause

It is suspected that memory reading failure occurred due to EEP ROM variation when the situation is made. Indoor PCB need to be retrieved for those symptom.

Solution

Reset option code as designated code (auto-restart not available then)
If customer insist auto-restart function, replace indoor PCB as new ones.




Modified Option code

Model (Indoor)	Option (current)	Option (modified)	Remark
AQV09FAN	084777-17524E	084777-17424E	9th digit change 5 --> 4
AQV12FAN	094877-17524E	094877-17424E	
AQV18FAN	0AD777-17526E	0AD777-17426E	
AQV24FAN	0BC777-17526E	0BC777-17426E	
AQV09MSAN	004777-17524E	004777-17424E	
AQV09MWAN	004777-17524E	004777-17424E	
AQV12MSAN	014777-17526E	014777-17426E	
AQV12MWAN	014777-17526E	014777-17426E	
AQV18MSAN	02E777-17524E	02E777-17424E	
AQV18MWAN	02E777-17524E	02E777-17424E	
AQV24MSAN	03C777-17526E	03C777-17426E	
AQV24MWAN	03C777-17526E	03C777-17426E	
AQV09VBAN	044777-17520C	044777-17420C	
AQV09VSAN	044777-17520C	044777-17420C	
AQV12VBAN	054777-17521D	054777-17421D	
AQV12VSAN	054777-17521D	054777-17421D	
AQV18VBAN	06E777-17524E	06E777-17424E	
AQV18VSAN	06E777-17524E	06E777-17424E	
AQV24VBAN	07C777-17526E	07C777-17426E	
AQV24VSAN	07C777-17526E	07C777-17426E	

Application Date : Since 2007/05/14	Serial No :	
Application	Reference ()	Only Defected sets (Whole sets ()
Attachment	Schematic Diagram ()	Exploded View ()
	Mechanical Diagram ()	Repairment Method ()

Published by : _____ **Checked by :** _____ **Approved by :** _____

3-2 Indoor Display Error and Check Method

Description	LAMP		
	OPERATION	TIMER	TURBO
			
Indoor unit room temperature sensor error (open or short)	○	◐	○
Indoor unit heat exchanger temperature sensor error (open or short)	◐	◐	○
Indoor fan motor malfunction	○	○	◐
EEPROM error	◐	◐	◐
Option error (option wasn't set up or option data error)	◐	◐	◐
Outdoor unit error	◐	○	◐
Communication error	○	◐	◐

● : Lamp on, ○ : Lamp off, ◐ : Lamp blink

3-3 Outdoor LED Error Display and Check Method

No.	LED Display			Explanation
	Yellow	Green	Red	
1	○	○	○	Power off/ VDD NG
2	○	○	◎	IPM Over Current(O.C)
3	○	○	●	Abnormal Serial communication
	○	●	●	
4	○	◎	○	Compressor Starting error
5	○	◎	●	Normal Operation
6	○	●	○	Compressor Lock error
7	○	●	◎	DC-Link voltage under/over error
8	◎	○	◎	Outdoor temperature sensor error
9	◎	○	●	Discharge over temperature
10	◎	◎	○	Discharge temperature sensor error
11	◎	◎	●	Current sensor error
12	◎	●	○	Compressor limit error
13	◎	●	◎	Coil temperature sensor error
14	◎	●	●	1min. Time out Communication
15	●	○	○	Fan error
16	●	○	◎	OTP error
17	●	○	●	Compressor rotation error
18	●	◎	◎	DC-Link voltage sensor error
19	●	◎	●	I_Trip error / PFC Over current
20	●	●	○	GAS Leak error
21	●	●	◎	AC Line Zero Cross Signal out
22	●	●	●	Power ON reset(1sec)
23	◎	○	○	Capacity miss match

● : LED ON, ○ : LED OFF, ◎ : LED BLINK

3-2 Indoor Display Error and Check Method

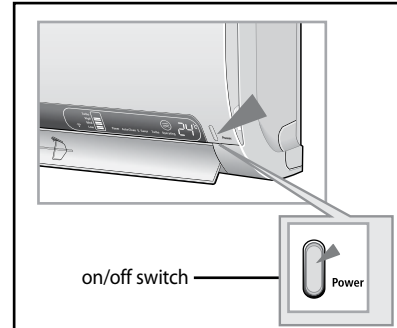
No	LED Display	Explanation	Explanation
1	E464	IPM Over Current(O.C)	
2	E461	Compressor Starting Error	
3	E473	Compressor Lock Error	
4	E466	DC-Link voltage under/over Error	
5	E221	Outdoor temperature sensor Error	
6	E416	Discharge over temperature	
7	E251	Discharge temperature sensor Error	
8	E468	Current sensor Error	
9	E465	Compressor Vlimit Error	
10	E237	Coil temperature sensor Error	
11	E202	1min. Time out Communication	
12	E458	Fan Error	
13	E471	OTP Error	
14	E467	Compressor Rotation Error	
15	E440/E441 (Low/High)	Operation condition secession	
16	E469	DC-Link valtage sensor Error	
17	E462	L_Trip error / PFC Over current	
18	E554	Gas Leak Error	
19	E472	AC Line Zero Cross Signal out	
20	E556	Capacity Miss-match	
21	E121	Room sensor Error	Open/Short
22	E122	In-coil sensor Error	Open/Short
23	E154	FAN Error	Indoor Fan Motor Abnormal Operation Holding for 15 sec. at less than 450rpm
24	E101	1min. Time out Communication	
25	E186	MPI Error	
26	All Lamps Blink	EEPROM Error	
27	All Lamps Blink	Option Error	Option Not Set up, Option Data Error

3. Alignment and Adjustments

3-1 Test Mode

How to Approach Test Mode

You can approach the Test Mode by pressing the on/off switch of indoor unit for 5 seconds.



Test Mode Operation Option

After installing the air conditioner, check whether each subordinate is normally operated or not by operating the Test Mode.

- **Temperature Display Part** : Display the set option at one-second intervals. (Only for models having the temperature display part)
 ex) 0b0000-1730F8 : 0b→00→00→17→30→F8→0b ...(Repeat)
- **When an error occurs, display the Error Mode.**

LED Display		Cause	Follow-up Measures																		
LED LAMP	7-segment Display																				
Waiting Operation	88																				
OFF	E1→21→E1	Indoor temperature sensor error (OPEN /SHORT)	<ul style="list-style-type: none"> • Check assembling status of the sensor part's connector on the indoor unit main PCB • Measure the resistance value on both sides – connector no. 1 and no. 2 (E1), no. 3 and no. 4 (E2) – by separating the sensor part's connector 																		
OFF	E1→22→E1	Indoor heat exchanger temperature sensor error (OPEN /SHORT)	<table border="1"> <thead> <tr> <th>Temp. (°C)</th> <th>Resistance Value(KΩ)</th> <th>Temp. (°C)</th> <th>Resistance Value(KΩ)</th> <th>Others</th> </tr> </thead> <tbody> <tr> <td>15</td> <td>14.68</td> <td>30</td> <td>8.31</td> <td rowspan="3">The error of DATA is ±2%.</td> </tr> <tr> <td>20</td> <td>12.09</td> <td>35</td> <td>6.94</td> </tr> <tr> <td>25</td> <td>10.00</td> <td>40</td> <td>5.83</td> </tr> </tbody> </table> <p>* If not meet the above DATA, replace sensors.</p>	Temp. (°C)	Resistance Value(KΩ)	Temp. (°C)	Resistance Value(KΩ)	Others	15	14.68	30	8.31	The error of DATA is ±2%.	20	12.09	35	6.94	25	10.00	40	5.83
Temp. (°C)	Resistance Value(KΩ)	Temp. (°C)	Resistance Value(KΩ)	Others																	
15	14.68	30	8.31	The error of DATA is ±2%.																	
20	12.09	35	6.94																		
25	10.00	40	5.83																		
OFF	E1→54→E1	Indoor fan motor speed detecting error (Occur when it continues for 15 seconds at below 450rpm)	<ul style="list-style-type: none"> • Check assembling status of the Motor Hall IC output connector (CN44) on the indoor unit main PCB 																		
OFF	E1→52→E1	EEPROM error (Option memory) * Display only for models having the returning function for the power failure	<ul style="list-style-type: none"> • Reset options • Replace the PCB 																		
Blink all lamps	Display Flickering	When there is an option related error When options are not set When there is an option data error	<ul style="list-style-type: none"> • Reset options 																		

■ OPTION ITEMS

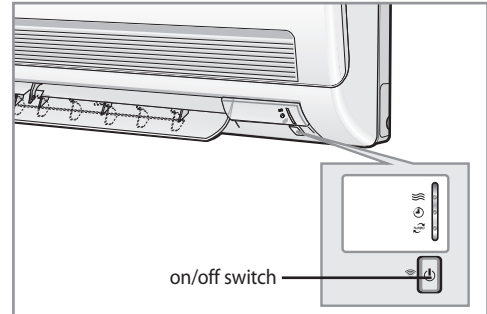
REMOCON MODEL	SEG1	SEG2	SEG3	SEG4	SEG5	SEG6	SEG7	SEG8	SEG9	SEG10	SEG11	SEG12
AQ09MSBN	0	2	7	2	2	6	1	7	C	2	3	7
AQ12MSBN	0	2	4	0	2	5	1	7	4	2	0	A
AQ18MSBN	0	6	7	0	1	3	1	7	C	2	2	8
AQ24MSBN	0	6	7	1	1	4	1	D	C	2	3	BZ

3. Alignment and Adjustments

3-1 Test Mode

■ How to Approach Test Mode

You can approach the Test Mode by pressing the on/off switch of indoor unit for 5 seconds.






■ Test Mode Operation Option

After installing the air conditioner, check whether each subordinate is normally operated or not by operating the Test Mode.

- **Temperature Display Part** : Display the set option at one-second intervals. (Only for models having the temperature display part)

ex) 0b0000-1730F8 : 0b→00→00→17→30→F8→0b ...(Repeat)

- **When an error occurs, display the Error Mode.**

Waiting Operation	LED Display			Cause	Follow-up Measures																		
	LAMP																						
	OPERATION 	TIMER 	TURBO 																				
OFF	○	◐	○	Indoor temperature sensor error (OPEN /SHORT)	<ul style="list-style-type: none"> • Check assembling status of the sensor part's connector on the indoor unit main PCB • Measure the resistance value on both sides – connector no. 1 and no. 2 (E1), no. 3 and no. 4 (E2) – by separating the sensor part's connector 																		
OFF	◐	◐	○	Indoor heat exchanger temperature sensor error (OPEN /SHORT)	<table border="1"> <thead> <tr> <th>Temp. (°C)</th> <th>Resistance Value(KΩ)</th> <th>Temp. (°C)</th> <th>Resistance Value(KΩ)</th> <th>Others</th> </tr> </thead> <tbody> <tr> <td>15</td> <td>14.68</td> <td>30</td> <td>8.31</td> <td rowspan="3">The error of DATA is ±2%.</td> </tr> <tr> <td>20</td> <td>12.09</td> <td>35</td> <td>6.94</td> </tr> <tr> <td>25</td> <td>10.00</td> <td>40</td> <td>5.83</td> </tr> </tbody> </table> <p>* If not meet the above DATA, replace sensors.</p>	Temp. (°C)	Resistance Value(KΩ)	Temp. (°C)	Resistance Value(KΩ)	Others	15	14.68	30	8.31	The error of DATA is ±2%.	20	12.09	35	6.94	25	10.00	40	5.83
Temp. (°C)	Resistance Value(KΩ)	Temp. (°C)	Resistance Value(KΩ)	Others																			
15	14.68	30	8.31	The error of DATA is ±2%.																			
20	12.09	35	6.94																				
25	10.00	40	5.83																				
OFF	◐	○	◐	Indoor fan motor speed detecting error (Occur when it continues for 15 seconds at below 450rpm)	<ul style="list-style-type: none"> • Check assembling status of the Motor Hall IC output connector (CN44) on the indoor unit main PCB 																		
OFF	○	◐	◐	EEPROM error (Option memory) * Display only for models having the returning function for the power failure	<ul style="list-style-type: none"> • Reset options • Replace the PCB 																		
Blink all lamps	◐	◐	◐	When there is an option related error When options are not set When there is an option data error	<ul style="list-style-type: none"> • Reset options 																		

■ OPTION ITEMS

REMOCON MODEL	SEG1	SEG2	SEG3	SEG4	SEG5	SEG6	SEG7	SEG8	SEG9	SEG10	SEG11	SEG12
AQ12FA	0	8	6	0	2	3	1	7	0	2	6	C
AQ12FASER	0	8	6	0	2	5	1	7	0	2	4	C
AS12FAXFA	0	8	0	0	0	0	1	7	0	2	4	C
AS12FBAXAP	0	8	0	0	0	0	1	7	0	2	4	C

■ OPTION ITEMS

REMOCON MODEL	SEG1	SEG2	SEG3	SEG4	SEG5	SEG6	SEG7	SEG8	SEG9	SEG10	SEG11	SEG12
AQ18FA	0	6	7	0	1	4	1	7	0	2	4	E
AS18FA	0	6	0	0	0	0	1	5	0	2	4	E
AQ18FAMID	0	8	7	0	2	7	1	8	0	3	8	2
AS18FAMID	0	8	0	0	0	0	1	8	0	3	8	2
AQ18FAUMG	0	8	6	4	0	6	1	7	0	2	4	E
AS18FAUMG	0	6	0	0	0	0	1	5	0	2	4	E
AQ18FBAXAP	0	8	5	4	2	8	1	8	0	3	8	2
AS18FBAXAP	0	A	0	0	0	0	1	8	0	3	A	4

■ OPTION ITEMS

REMOCON MODEL	SEG1	SEG2	SEG3	SEG4	SEG5	SEG6	SEG7	SEG8	SEG9	SEG10	SEG11	SEG12
AQ24FAMID	0	8	5	0	D	5	1	D	0	3	6	0
AS24FAMID	0	8	0	0	0	0	1	A	0	3	7	1
AQ24FAUMG	0	8	5	4	D	3	1	D	0	3	8	2
AS24FAUMG	0	8	0	0	0	0	1	A	0	3	7	1